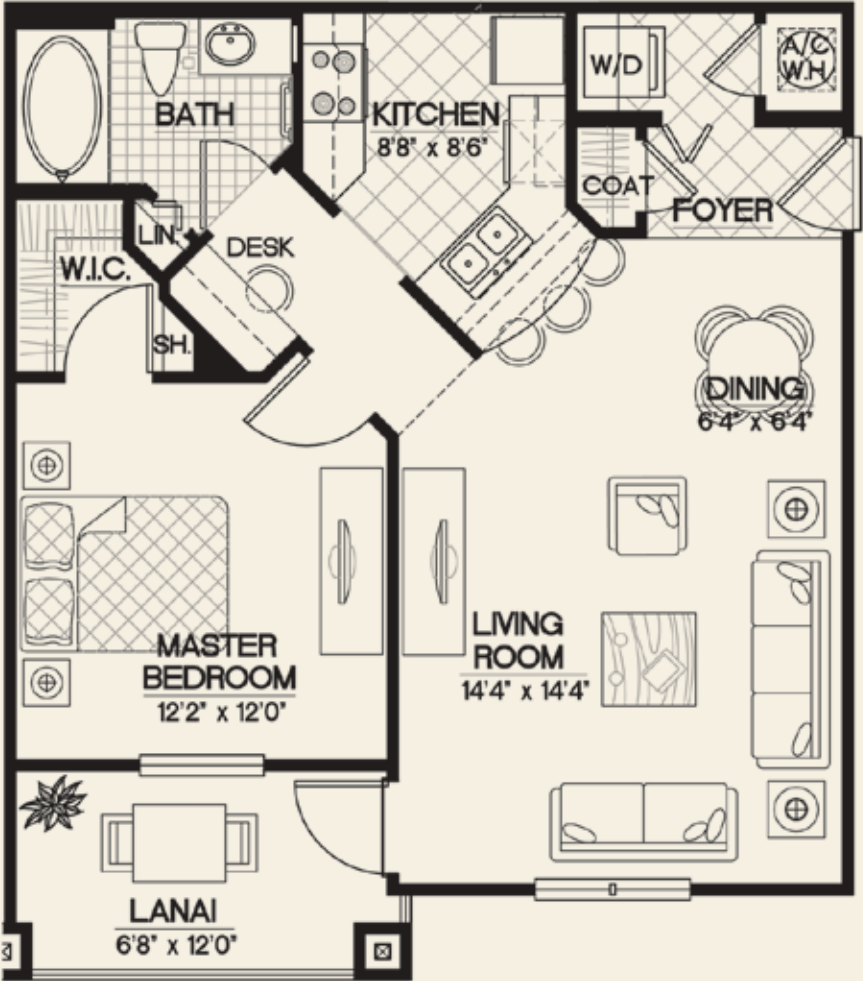


The Seabrook

ONE BEDROOM/ONE BATH
741 SQ. FT.



Designed with today's living in mind, this one-bedroom one-bathroom floor plan features a grand living space adjoining the living, dining and kitchen areas. This open arrangement is punctuated by crown moldings and direct access to a private lanai. The cozy master suite is a delight to retire in each evening, offering a large walk-in closet and large window beckoning the outside in.

The Palmetto Carriage

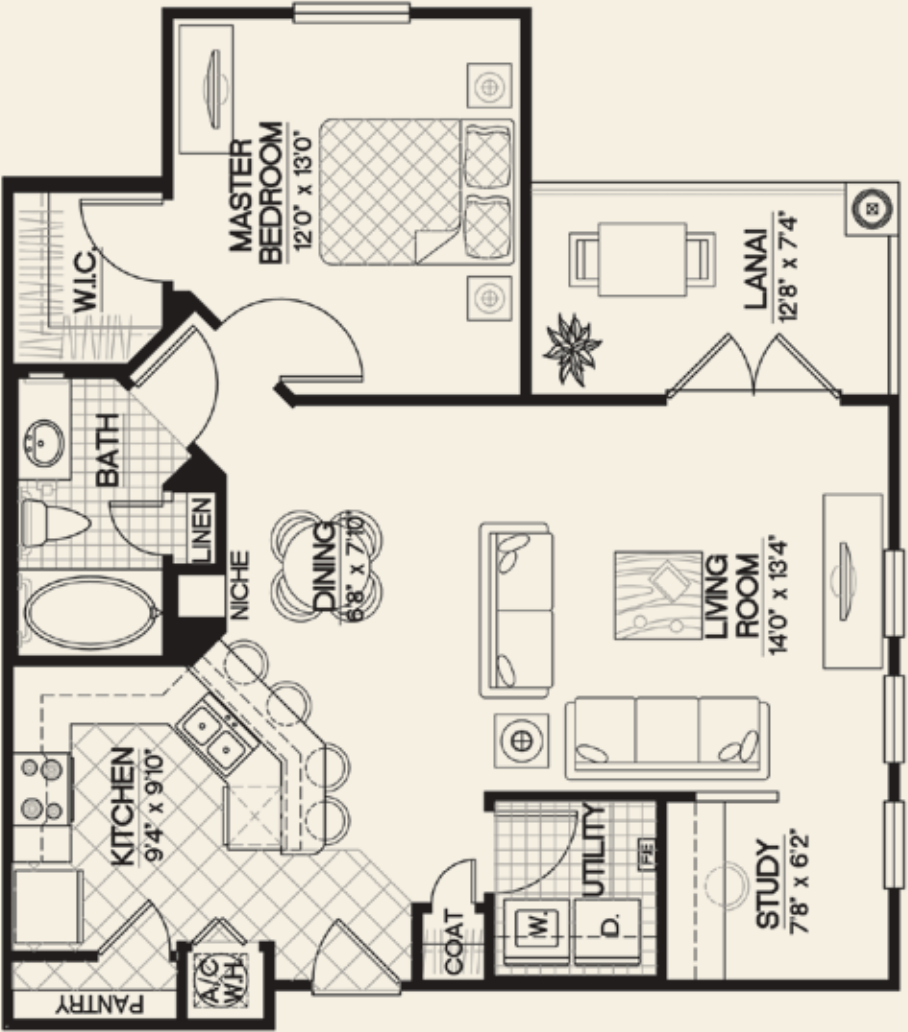
ONE BEDROOM/ONE BATH
908 SQ. FT.



Handsomely arranged, this floor plan possesses an inviting quality that is an entertainer's delight. Symmetrically placed windows welcome you and provide plenty of natural light throughout the home. Offering the utmost in privacy, this apartment sprawls over top of four garages with no adjacent neighbors, allowing for expansive rooms throughout.

The Hatteras

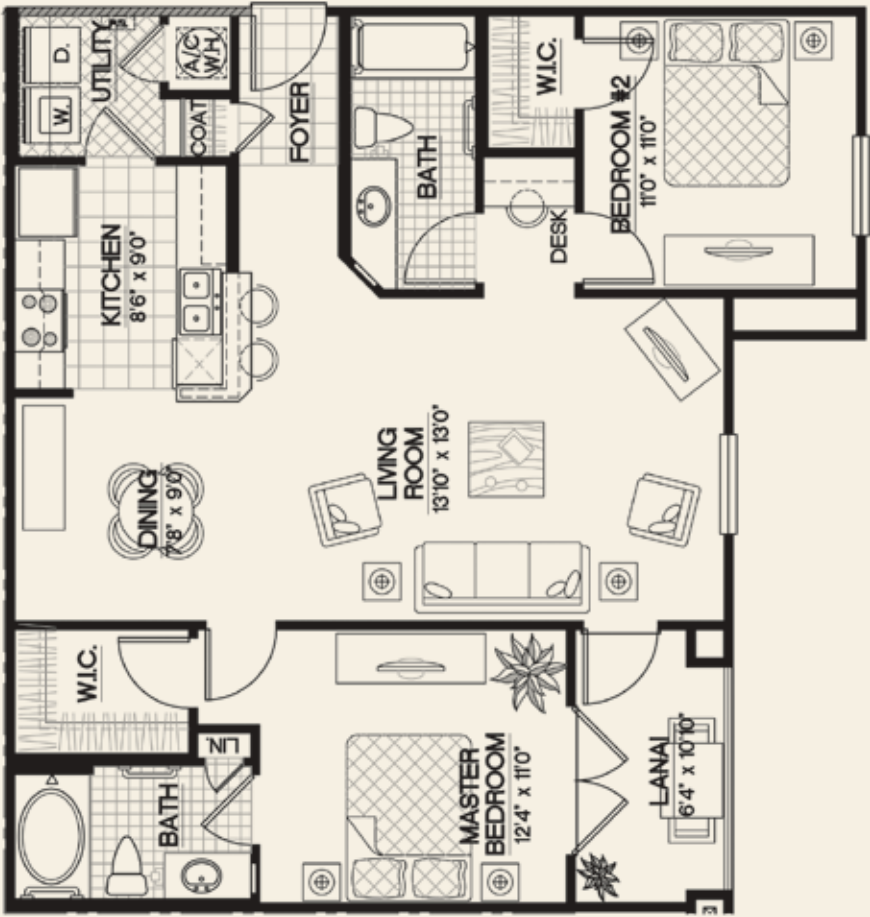
ONE BEDROOM/ONE BATH
854 SQ. FT.



This one-bedroom design contains a variety of features that make it outstanding. The kitchen, with a wraparound counter, serving bar and walk-in pantry, makes mealtimes a cinch! The living room, with abundant windows, is conveniently joined with the cozy computer niche and also has direct access to a sunlit private lanai. The spacious master bedroom is designed for luxury and privacy with an enormous walk-in closet that is every shopper's dream!

The Cape Side

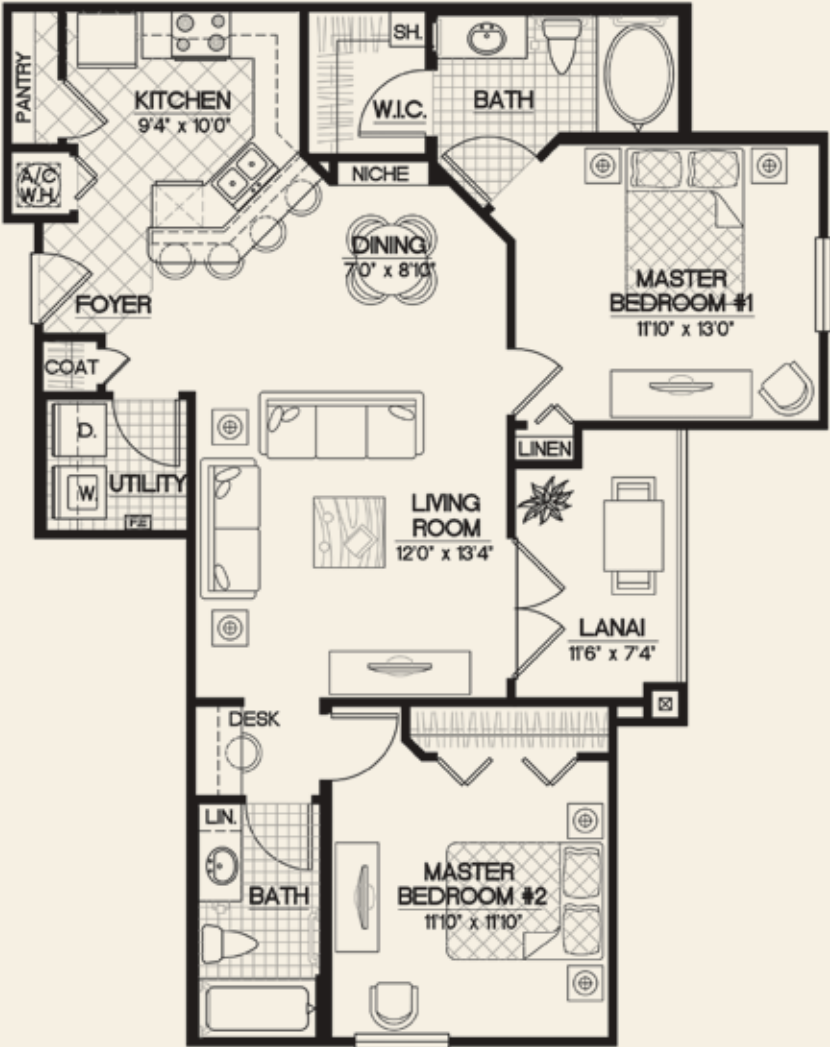
TWO BEDROOM/TWO BATH
1,059 SQ. FT.



The gallery-style foyer is just a hint of the wonderful possibilities inside this beautiful two-bedroom home. The floor plan holds open living areas with a great room flanking the dining and U-shaped kitchen, which includes plenty of counter space and 42" cabinets. The entire back side of this floor plan is taken up by the master suite, ensuring privacy and allowing direct access to the private lanai. Luxurious!

The Tidewater

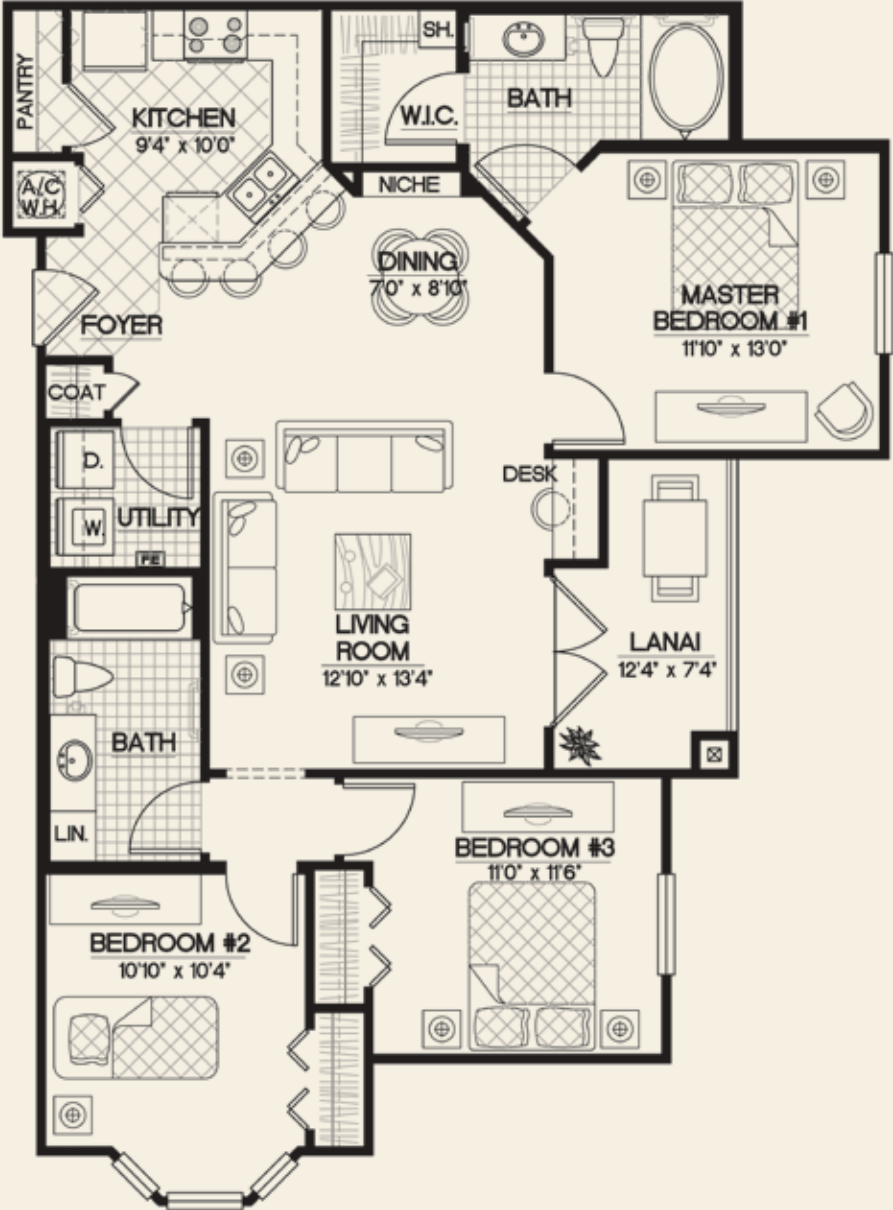
TWO BEDROOM/TWO BATH
1,054 SQ. FT.



An ideal choice for shared living arrangements with two spacious master suites this design contains a variety of outstanding features including a sizeable kitchen with walk-in pantry, and an enormous grand living area with large, French doors opening to the terrace for easy outdoor entertaining. Embellished with interesting details such as crown moldings, built-in shelving, a computer niche and complimentary fan, it's a decorator's dream.

The Summer Crest (WITH BAY)

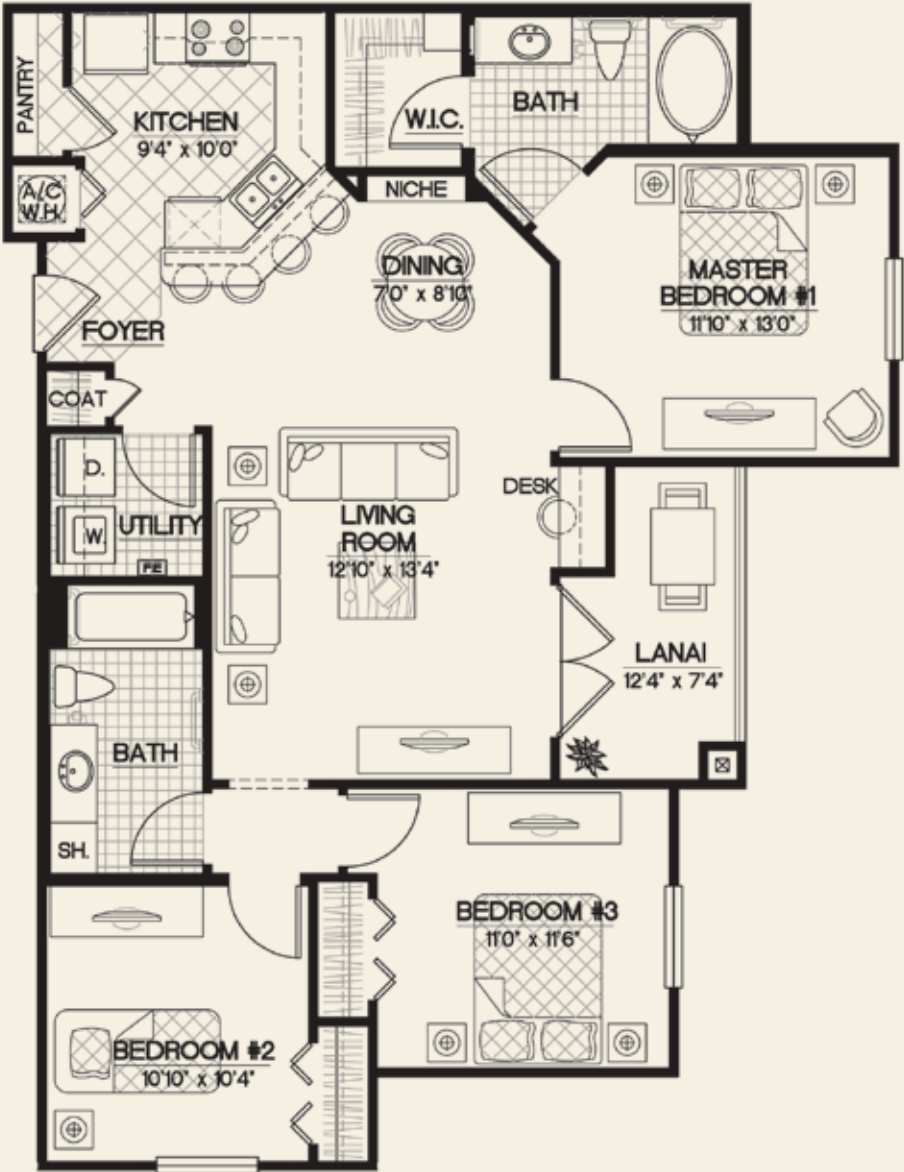
THREE BEDROOM/TWO BATH
1,211 SQ. FT.



A nearly exact duplicate, this floor plan warms to a myriad of lifestyles. The complementary elements of this home are the bay window and a master suite fit for royalty. A computer niche and full-sized washer/dryer add to the wonderful livability of this apartment home. Quaint, yet as majestic as the most luxurious of homes.

The Summer Crest (NO BAY)

THREE BEDROOM/TWO BATH
1,199 SQ. FT.



Incredibly spacious, this three-bedroom home is marked with grace and style. A large, angled kitchen, adjacent to the living and dining rooms, includes a huge breakfast bar and adds to the livability of this apartment home. You won't find the space cramped and the floor plan is flexibly suited for formal dinners or casual entertaining.

Integra Shores SITE PLAN

